

# Natural Stone Products & Services



**PHOTO: SEAHAZE SAND<sup>™</sup> Limestone**

**GOthicSTONE**

Complete Turnkey Stone Solutions 2026

*Limestone Travertine Marble Granite Terrazzo Pavers  
Manufacturer*



# Why GOTHICSTONE

Are you looking to achieve a one-of-a-kind aesthetic for your special project? We produce custom selected natural stone products to achieve the most optimal outcome.

## Turnkey Stone Solutions

We provide Travertine, Limestone, Marble natural stone and now Terrazzo (natural stone agglomerate) products to your exacting specifications which result in a customized project that the professional design consultant working in tandem with both the client and builder can expect.

In today's landscape and interior design concepts, natural stone can be a fashionable old-world look, but it is also an excellent choice for a contemporary aesthetic in a wide variety of projects, patios, pool decks, terraces, driveways, pool houses and any outdoor or indoor living spaces. When utilizing natural stone sourced from a company with the history and broad access to the source as Gothicstone there are no boundaries, there are no limitations. There is no such thing as "it doesn't come in that size" or "you'll have to find those complementary architectural features somewhere else." In today's busy world there is no time for those sourcing bottlenecks for you or your clients.

### **One Stop Shopping – *THE PROFESSIONAL'S ADVANTAGE***

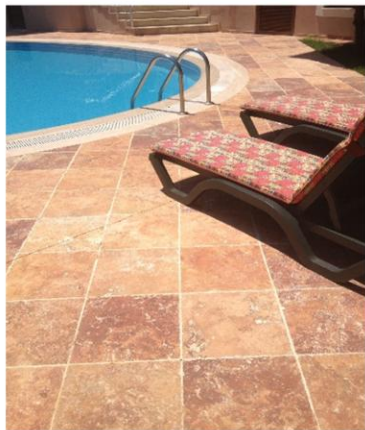
One-stop shopping is the ultimate solution and there is no substitute for streamlining your sourcing by having the various 'pieces to the puzzle' drop shipped all at once and readily available to smoothly integrate the materials into your project without interruption.

You will find that partnering with Gothicstone on your next project will



# Modern Aesthetic Ancient Materials

We take pride in assisting our clientele in implementing the timeless beauty of natural stone. We offer consultation to guide you every step of the way. We have decades of experience in the production and distribution of natural stone.



We provide value-added design engineering, production and consulting services for producing material for stock or project work. We are the producer/manufacturer of our product lines assisting our clientele by value engineering the material selections specific to their individual needs.

(Photo: Peach Travertine)

---

***“NATURAL STONE  
IS OUR PASSION –  
LIMESTONE,  
TRAVERTINE, AND  
MARBLE PROJECTS  
ARE OUR  
SPECIALTY!”***

***KARL MANGIALARDI,  
Founder, CEO***

(Photo: Silver Travertine,  
Toadflax selection)



# Our Services

Clients have designs or complexities in their projects that require an expert source for the best ways to engineer a solution. The most dynamic and consequential phase of any project is the advanced planning, engineering alternatives and product selections.

Gothicstone provides *free value-added consulting services* to our clients thereby assisting in various stages of planning, designing, selecting, value-engineering, and installation for pool decks, patios/walkways, driveway projects and throughout the interior of the home and commercial projects. Architects, designers, builders, contractors and importers who are interested in our project and product consulting expertise for product manufacturing and project implementation derive great benefit from these services compared to ordering from a static catalogue. Your clients get the most value out of their investments when we join in your success with Gothicstone value added services.

# Our Philosophy

## 01

### **MODERN AND TIMELESS DESIGN**

As with all natural products, we believe that utilizing natural stone will add timeless beauty and ongoing value to any project. We collaborate with our industry partners to achieve a fashion-forward aesthetic custom tailored to their regional tastes.

We are continually introducing new surface finishes, sizes and materials to advance the dynamic growth and changes inherent in this industry.

## 02

### **FASHION FORWARD PRODUCTS**

We have witnessed trends in design, colors and formats of natural stone pavers and tile and are proud to be continually staying ahead of the fashion curve and enticing early adopters.

We deliver smart solutions by designing safety into our products, with a particular focus on high-co-efficient of friction (non-slip) surface finishes..

## 03

### COMPLIMENTARY CLIENT SERVICES


Offered to architects, designers, builders, and contractors who are interested in our project and product consulting expertise for the various stages of product manufacturing and project implementation.

- Value engineering
- Design consulting
- Installation consulting
- Maintenance consulting

## 04

### GREEN INNOVATIONS

Gothicstone is beta testing next-generation products developed to advance the zero-net-carbon initiative. These innovations integrate sustainable technologies with cost-saving prefabricated panels and natural stone building block systems.



***WE DELIVER INNOVATIVE  
PRODUCTS DESIGNED TO  
SUPPORT AND ACCELERATE OUR  
CLIENTS' BUSINESS GROWTH.***

# Products & Surface Finishes

---

## PAVERS & HARDSCAPES

Our production ranges from cobblestones, 4"x4" or butter stick 2"x8" sizes (common for walkways and driveways in thicknesses up to 2-3") to extra-large pavers and tile sizes such as 24"x24", 18"x36", and even up to 48"x48" and other custom sizes (rectangular, square, or patterns). We are happy to accommodate our clients with bespoke project capabilities.

## COPING & STEP TREADS

Our pool copings and step treads are flat faced (eased edge) and the standard thicknesses that we offer include four sizes – 3cm (1.25" thick), 5cm (2"), 6cm (2.4") and 7cm (2.8"). The dimensions range from 6x12 to 24 x 72 (and everything in between). We also produce per bespoke project specifications

---

## VENEERS & CLADDING

Before you fall for that faux stone panel, remember that artificial products fade and degrade over time. Whereas natural stone veneers will look great for generations to come! With a textural change in the stone for veneer and/or cladding, such as split face, hand-chisel, or bush hammer, you can add the distinction of an accent look without changing the base color of the stone used in the project. Veneers and cladding product sizes range from 4" or 6" x free length and up to 20" x 40" (Gothicstone gives an exclusive added benefit of including bush hammered "back" finishing for enhanced adhesion to the substrate.

## DRIVEWAY SYSTEMS

Though we often think of concrete or asphalt driveway systems, paved natural stone driveways have been around for thousands of years! Natural stone provide the necessary compressive strength and add an artistic element, so driveways are not just a functional component but become a unique enhancement for the property.

---

---

## KITCHENS & BATHS

Long before we started producing exterior pavers, coping, and tread products in the 1990's, our focus was on stone tile for interior, both residential and commercial (and exterior projects, set on slab). Travertine and limestone from Italy Mexico Peru, and most notably, Turkey. After seeing the trend in outdoor concrete pavers, we expanded our company footprint to include an export office in Antalya, Turkey. Our one-stop shopping capabilities streamlined client sourcing by having various 'pieces of the puzzle' all produced together.

## SURFACE FINISHES

Textures are shifting away from rustic tumbled, and rounded edges to clean lines, square edges. In addition, tone on tone texturing can beautifully enhance the aesthetic of your designs. Adding an interesting trim or pattern through the addition or utilization of various surface finishes and textures achieves the added interest desired. New finishes such as Micro Bush Hammer, SUREGRIP MOLESKIN™, Hand-Chiseled, and, Etruscan Texture™ add soft and subtle interest. Common finishes such as honed, polished, split face, brushed and tumbled are historically the industry standards.

---



# Limestone Options

## **BAHIA**

**Limestone™**

(lighter than  
SEAHAZE SAND)



## **BOLETUS**

**Limestone™**

(Brownish taupe  
Limestone)



## **CARAMEL**

**LIMESTONE™**

(warmer and darker  
SEAHAZE SAND™)





**ENOKI**  
**Limestone™**  
(Light beige  
Limestone, raw  
finish)



**LICHEN**  
**Limestone™**  
(bone colored  
Limestone with  
fossils)



**NORMANDY**  
**Limestone™**  
(beige with large  
grain texture shot  
blasted finish)



## **PORTOBELLO**

**Limestone™**  
(Brown and Mauve  
earth tone colors)

## **SEAHAZE**

**SAND™**

**Limestone**  
(light beige)

## **SEAHAZE**

**SEA™**

**Limestone**  
(bluish gray)



## **SILVERBACK**

**Limestone™**

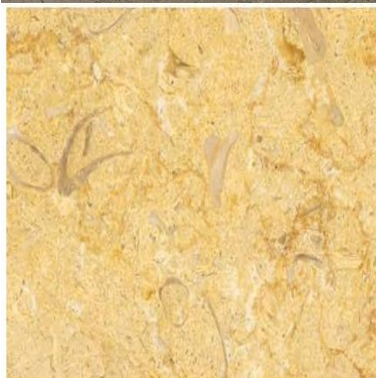
(dark grey and silver)



## **TREMELLA**

**Limestone™**

(Beige with a golden-brown background)



# Travertine Options

**Gothicstone**

**Walnut<sup>tm</sup>**

**Travertine**  
(creamy walnut  
beige)



**Gothicstone**

**Cream<sup>tm</sup>**

**Travertine**  
(light cream color)



**Oyster**

**Travertine<sup>tm</sup>**  
(beige & taupe)



## **Peach**

### **Travertine**

(mix of peach,  
brown, beige,  
yellow)



## **Silver**

### **Travertine**

#### **Adirondack selection**

(dark silver & dark  
gray)



## **Silver**

### **Travertine**

#### **Gunmetal selection**

(silver and gray)



**Silver**  
**Travertine**  
**Toadflax**  
**selection**  
(mix silver, grey,  
beige, cream)



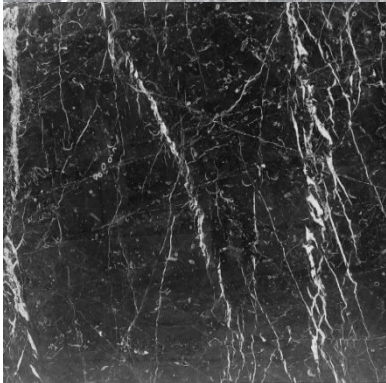


# Marble Options

**Grey Sky**  
**Marble™**  
(grey with white  
veining)



**Midnight**  
**Sky**  
**Marble™**  
(black with  
white veining)



**Motley**  
**Blue**  
**Marble™**  
(dark blue grey)



Online <https://www.gothicstone.com/materials/>



# Granite & Silverback Driveway Systems – Sizes & Color Options:

***Introducing new granite and Silverback Limestone for driveway systems, paving products, and wall systems.***

## **Granite Driveway Pavers Sizes available:**

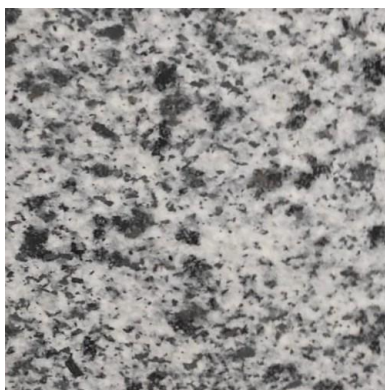
- 4"x4"x3cm, 4"x6"x3cm, 4"x8"x3cm, 4"x10"x3cm, 4"x12"x3cm, 4"x14"x3cm, 4"x16"x3cm
- 6"x6"x3cm, 6"x8"x3cm, 6"x10"x3cm, 6"x12"x3cm, 6"x14"x3cm, 6"x16"x3cm
- 8"x8"x3cm, 8"x10"x3cm, 8"x12"x3cm, 8"x14"x3cm, 8"x16"x3cm

## **Silverback Driveway Paver Sizes available:**

- 4"x4"x3cm, 4"x6"x3cm, 6"x6"x3cm – Tier 1 pricing
- Larger than 6"x6" must be 5cm – Tier 2 pricing

## **Granite Driveway Colors:**

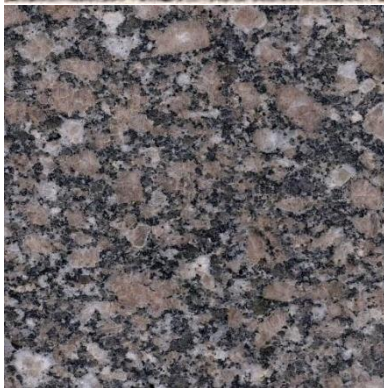
**Tangier#3**  
(black & white speckled)



**Tangier#5**  
(gray & white  
speckled)



**Tangier#7**  
(black, gray,  
mauve  
speckled)



**Tangier#9**  
(black, green  
speckled)



## **Tangier#12**

(yellow, green,  
gray speckled)



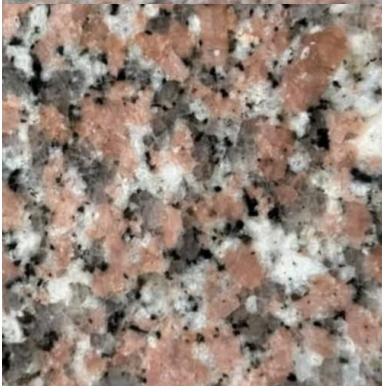
## **Tangier#14**

(reddish brown,  
gray, white  
speckled)



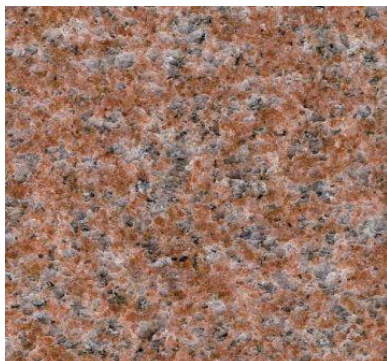
## **Tangier#16**

(reddish, black,  
and white  
speckled)



## **Tangier#18**

(gray & black  
speckled)



## **Tangier#20**

(gray & black  
speckled)



## **Tangier#23**

(gray & white)



# Terrazzo Options

Introducing Terrazzo pavers to our product line offering custom decos and sandblasted logos which can be specified for any size project and to accommodate any size budget.

This is NOT "poured in place" Terrazzo....which is quite common, on elementary and high school floors back in the day and big in institutional construction implementation. Terrazzo materials are available for commercial, institutional, and residential projects.

## **Finishes, Custom Decos and Logos**

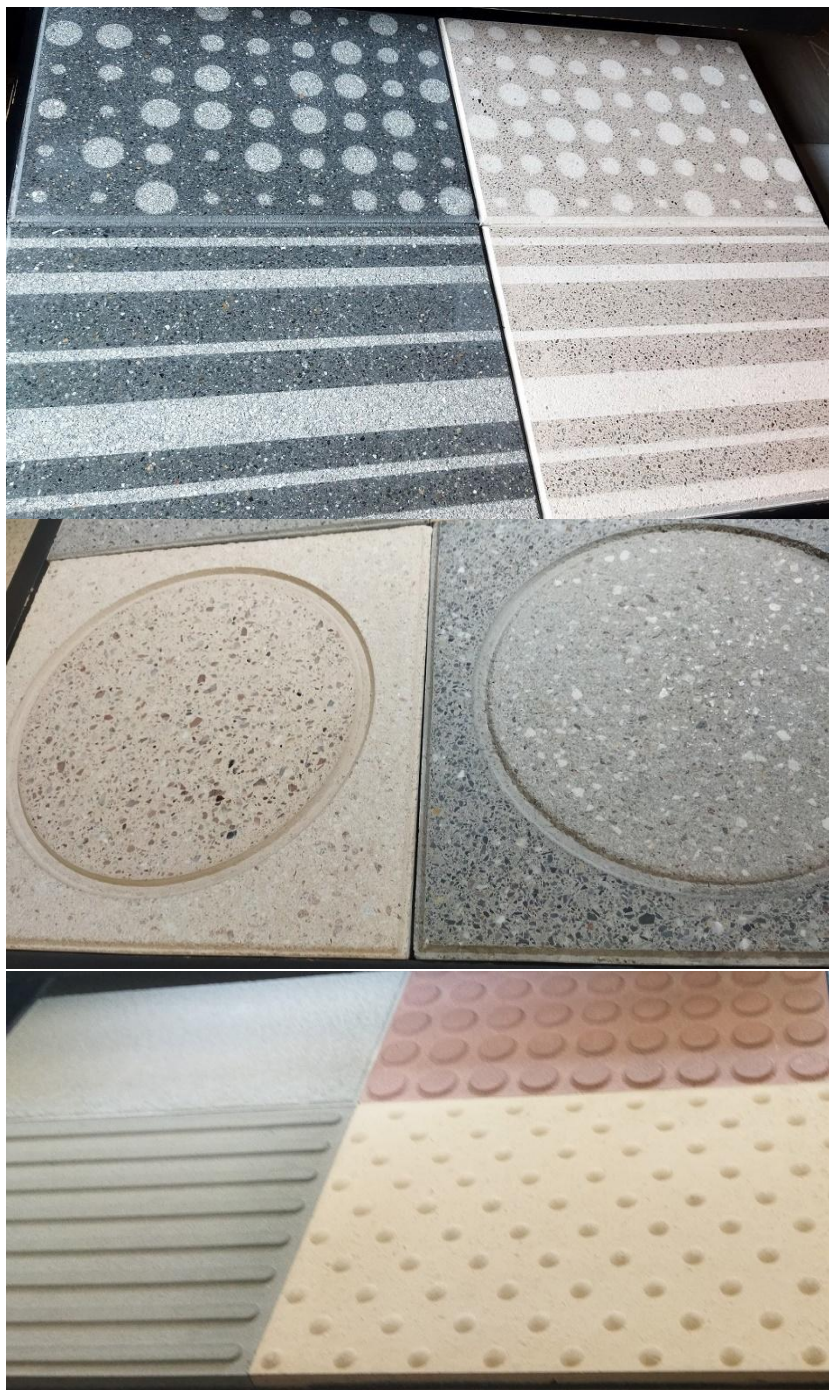
ADA-compliant products are also available in a multitude of colors and formats. Standard surface finishes are polished, sandblasted, and honed.

## **Examples of our Terrazzo Pavers**

A large color selection is available other than what is shown below in grey and beige.







Online <https://www.gothicstone.com/terrazzo-pavers/>



**GOTHICSTONE**

**WHOLESALE TO THE TRADE**

Phone: 610-308-1054 USA Office

Phone: 415-529-6066 North Africa Office

Email: [stonehunter@gothicstone.com](mailto:stonehunter@gothicstone.com)

CONTACT US FOR CONSULTATION & SALES

**[www.gothicstone.com](http://www.gothicstone.com)**